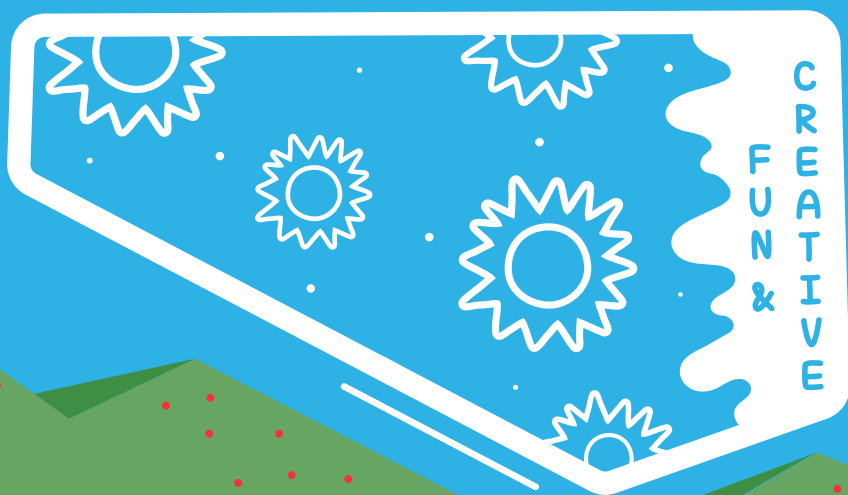




Ivy Prep International School

SUMMER SCHOOL 2021



STEAM SUMMER ADVENTURE

SUMMER IS THE TIME TO RELAX BUT IT'S ALSO A GREAT OPPORTUNITY TO ENJOY AND LEARN! SIGN UP FOR A WONDERFUL SUMMER SCHOOL AND START SEEING THE WORLD THROUGH THE EYES OF A TRUE STEAM EXPLORER! IVY PREP IS IMPLEMENTING THE UNITED NATION'S SUSTAINABLE GOALS (SDGs) THROUGH INSTRUCTIVE ACTIVITIES BASED ON THE GOAL OF THE WEEK. A GOOD WAY TO LEARN ABOUT IMPORTANT TOPICS WHILE HAVING FUN!



Morning Session : 8:30am - 2:00pm | Full-Day Session : 8:30am - 4:00pm
| Extended day : 8:30am - 6:00pm

3-11-4 Minamiazabu, Minato-ku Tokyo, 106-0047 JAPAN

info@giftedschooltokyo.com www.giftedschooltokyo.com [f](https://www.facebook.com/ivyprepinternationalschool) [i](https://www.instagram.com/ivyprepinternationalschool) ivyprepinternationalschool



IVY PREP
International School
APPLICATION FORM

SUMMER SCHOOL 2021

FROM JUN 7th to AUG 27th

Join us for a refreshing & exciting
STEAM Summer School !

Applicant information

First name	Last name
Date of Birth	Parent or Guardian Name
Address	
E-mail Contact	Phone Contact

Summer School Session

Which session would you would like to attend ?

SESSION	DATES*	WEEK 1	WEEK 2
Session 1	June 7 th - June 18 th		
Session 2	June 21 st - July 2 nd		
Session 3	July 5 th - July 16 th		
Session 4	July 19 th - July 30 th		
Session 5	August 2 nd - August 13 th		
Session 6	August 16 th - August 27 th		
Optional	August 30 th - Sept 3 rd		

● Please choose the type of session you would like to attend

Morning Session (M/F 8:30 am - 2:00 PM) Full-day Session (M/F 8:30 am - 4:00 PM) Extended day (M/F 8:30 am - 6:00 PM)

Service

*Morning/Afternoon Snack ¥200 each | *Lunch ¥600 | *If you need School Van Service (One-way ¥ 1,500 / each)
Please contact the school directly for further information at info@giftedschooltokyo.com

Morning Snack Lunch Afternoon Snack
 School Van Service (One-Way) School Van Service (Round-Way)

Desired Pick-up Point _____ Drop-off Point _____

*Please note that for the School Van Service we will get back to you with the options as we need to fit to our current route.

Special Requests: If you would prefer irregular schedule and types of session, please indicate below

Tuition

MEMBERS	Morning Session	Full-Day Session	Extended Day	NON MEMBERS	Morning Session	Full-Day Session	Extended Day
1 week	¥45,000	¥50,000	¥55,000	1 week	¥55,000	¥60,000	¥65,000
1 session (2 weeks)	¥80,000	¥90,000	¥100,000	1 session (2 weeks)	¥100,000	¥110,000	¥120,000
Per day	¥10,000	¥11,000	¥12,000	Per day	¥12,000	¥13,000	¥14,000

*Seasonal school fees are non refundable. Any change has to be made before May 31st.